

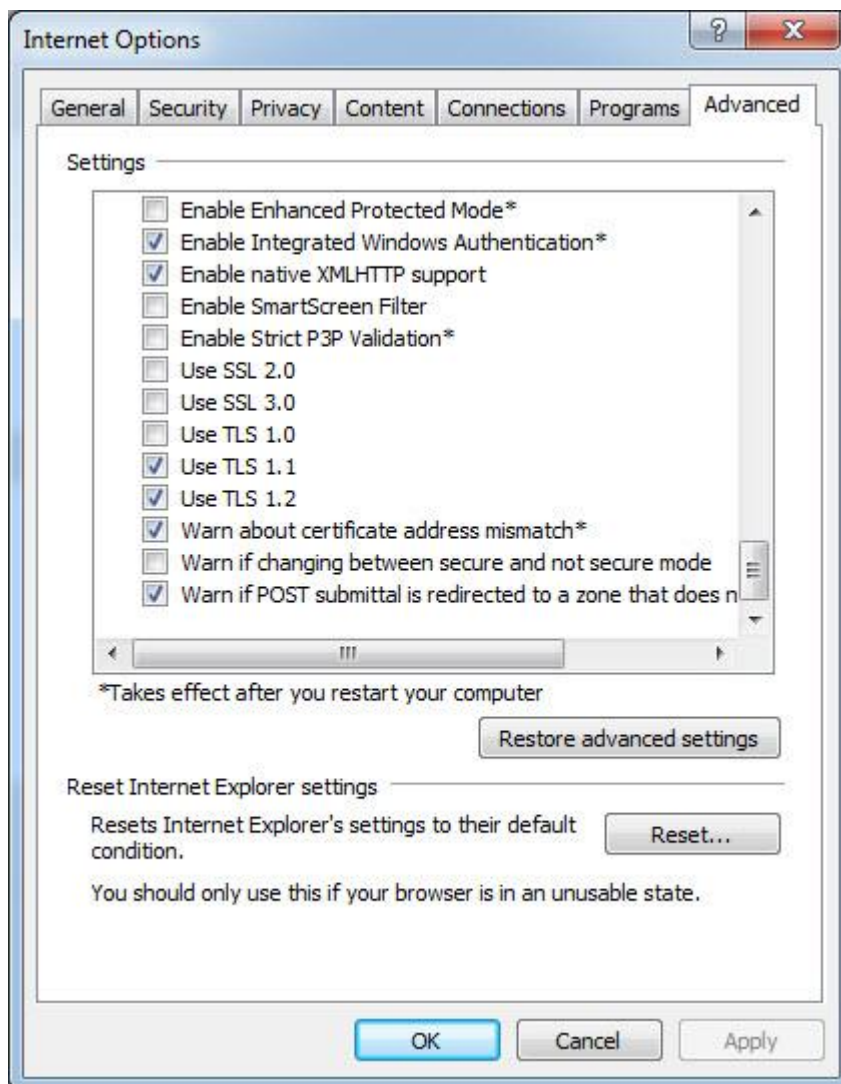
Description

To enable TLS 1.1 and/or TLS 1.2 protocols on web browsers, see the list below.

- [Microsoft Internet Explorer](#)
- [Google Chrome](#)
- [Mozilla Firefox](#)
- [Opera](#)
- [Apple Safari](#)

Microsoft Internet Explorer

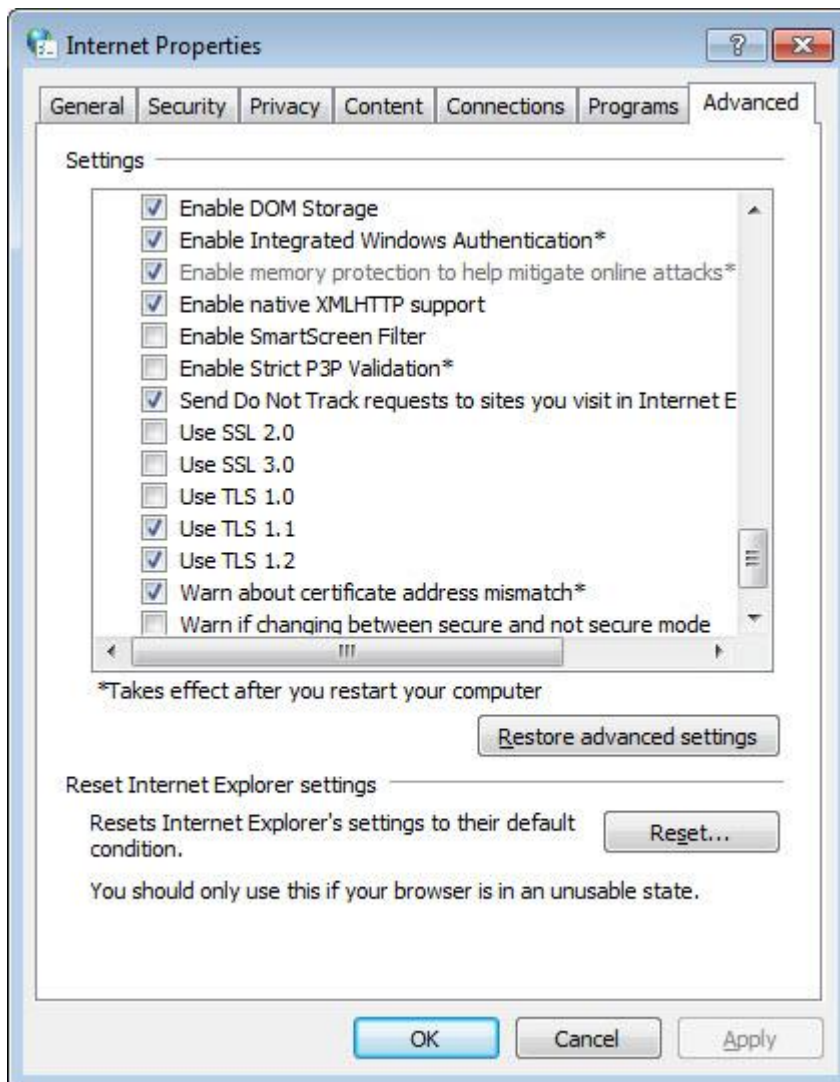
1. Open **Internet Explorer**
2. From the menu bar, click **Tools > Internet Options > Advanced** tab
3. Scroll down to **Security** category, manually check the option box for **Use TLS 1.1** and **Use TLS 1.2**



4. Click **OK**
5. Close your browser and restart Internet Explorer

Google Chrome

1. Open **Google Chrome**
2. Click **Alt F** and select **Settings**
3. Scroll down and select **Show advanced settings...**
4. Scroll down to the **Network** section and click on **Change proxy settings...**
5. Select the **Advanced** tab
6. Scroll down to **Security** category, manually check the option box for **Use TLS 1.1** and **Use TLS 1.2**



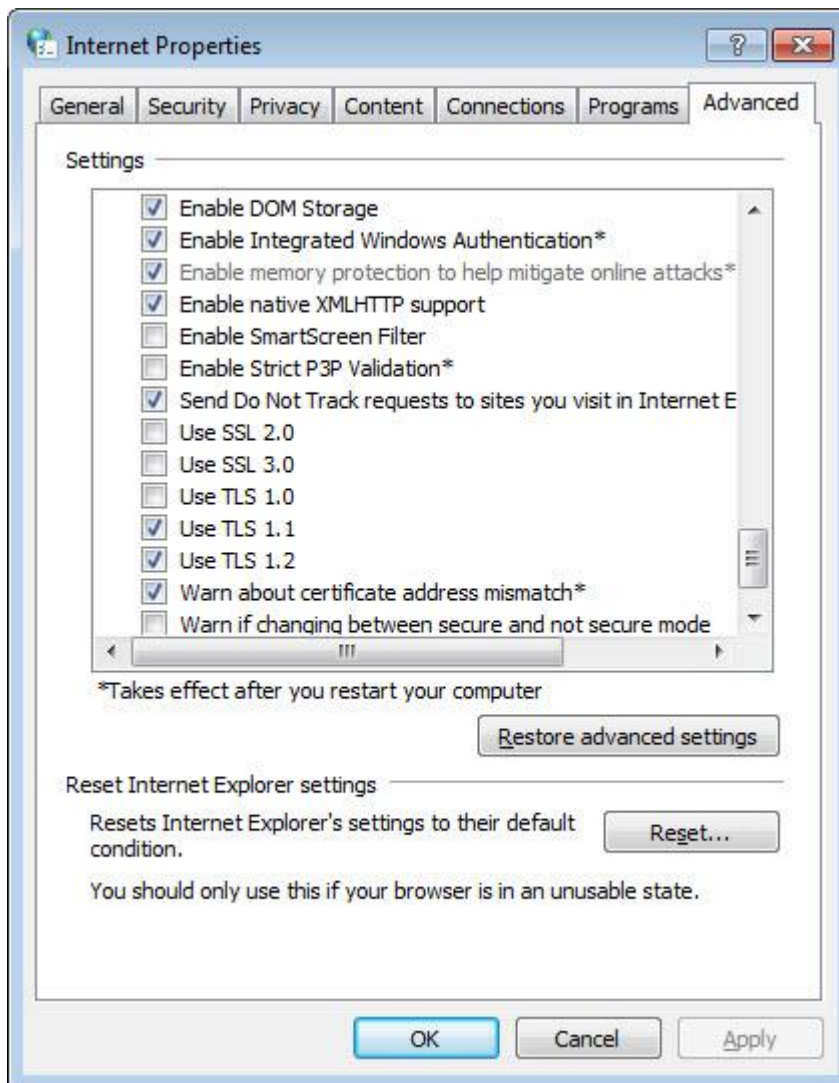
7. Click **OK**
8. Close your browser and restart Google Chrome

Mozilla Firefox

Upgrade Firefox to latest version

Opera

1. Open **Opera**
2. Click **Ctrl** plus **F12**
3. Scroll down to the **Network** section and click on **Change proxy settings...**
4. Select the **Advanced** tab
5. Scroll down to **Security** category, manually check the option box for **Use TLS 1.1** and **Use TLS 1.2**



6. Click **OK**
7. Close your browser and restart Opera

Apple Safari

There are no options for enabling SSL protocols. If you are using Safari version 7 or greater, TLS 1.1 and TLS 1.2 are automatically enabled.