

TEACHERS: Help Prevent the Introduction of Invasive Red Swamp Crayfish



Red swamp crayfish (*Procambarus clarkii*)

An invasive species that can cause significant ecological impacts and shoreline erosion due to their burrowing abilities

Use crayfish in the classroom?

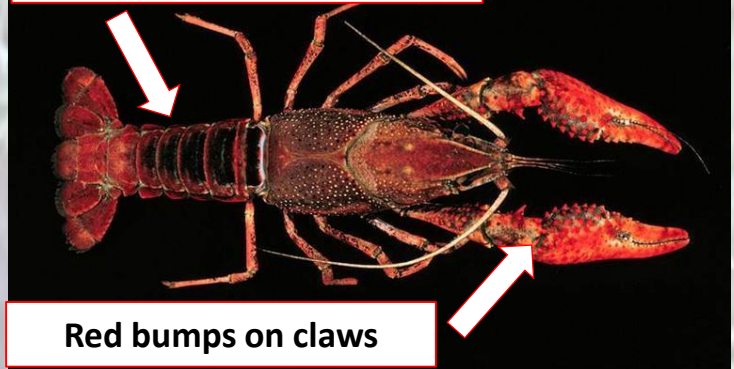
This invasive crayfish is common in biological supply kits provided to teachers for science lessons.

This species should not be used alive in the classroom

If you use crayfish in your classroom:

- Identify to make sure they aren't invasive
- If you think they might be invasive, take pictures of the crayfish
- Humanely dispose of the crayfish by placing them in a container and then in the freezer for 24 hours, then place the container with the crayfish in the trash – DO NOT RELEASE LIVE CRAYFISH!
- **Contact and send pictures to Lucas Nathan the AIS Coordinator, DNR-Fisheries (nathanL@michigan.gov)**

Black wedge shaped stripe



Red bumps on claws

Identification tips

- Dark red raised bumps on claws
- Black to blue line under tail
- Black wedge shaped stripe on top of tail
- 2.2 – 6+ inches in length



Black to blue line on tail



Protecting Michigan's natural resources through regulations
Red swamp crayfish have been prohibited in Michigan since 2015.

It is illegal to possess these crayfish alive regardless of the purpose.