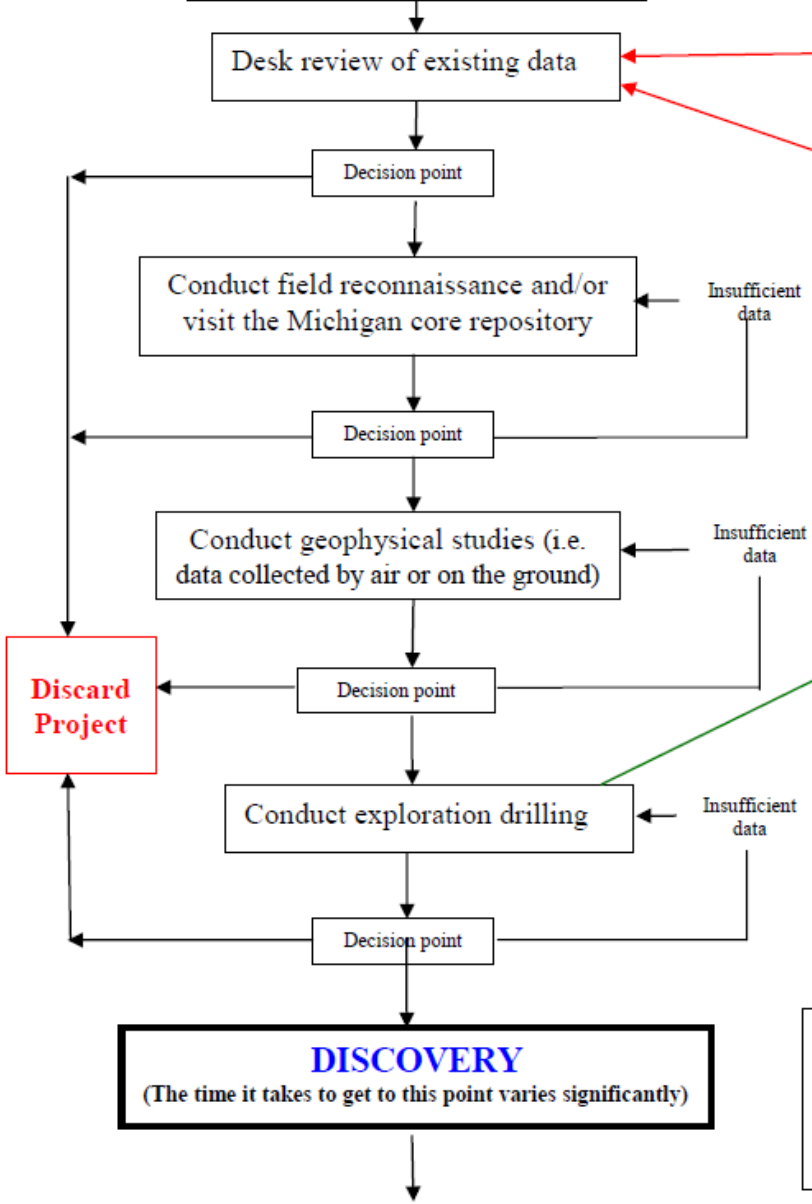


TYPICAL METALLIC MINERAL EXPLORATION

EXISTING DEQ/DNR PROCESS



Note: Exploration typically starts slow with an evaluation of existing geological data (i.e. maps, online core logs, and historical mine info)

Note: All metallic mineral exploration in Michigan in the last 15 years has been conducted by companies with a long history of exploring in the UP (This is why Prospectors and Developers Association of Canada (PDAC) is so important), (Over 30,000 people attended this year)

Note: Metallic mineral Exploration is extremely competitive; therefore, exploration companies are extremely secretive about their projects. All information regarding exploration drilling is considered proprietary under Part 625.

Request to conduct exploration drilling (This may be the first communication, if state lands are not involved)

Private

State

Part 625 Mineral Well Act¹
Contact DEQ UP Staff

Exploration Plan & Surface use permit²
Contact DNR Lansing Staff

¹ Most metallic mineral exploration occurs in an area exempt from acquiring a Part 625 permit. However, we are starting to see more exploration projects in areas where a permit is required (Potential area for Process Reform).
² DNR to add info (Potential area for Process Reform).

