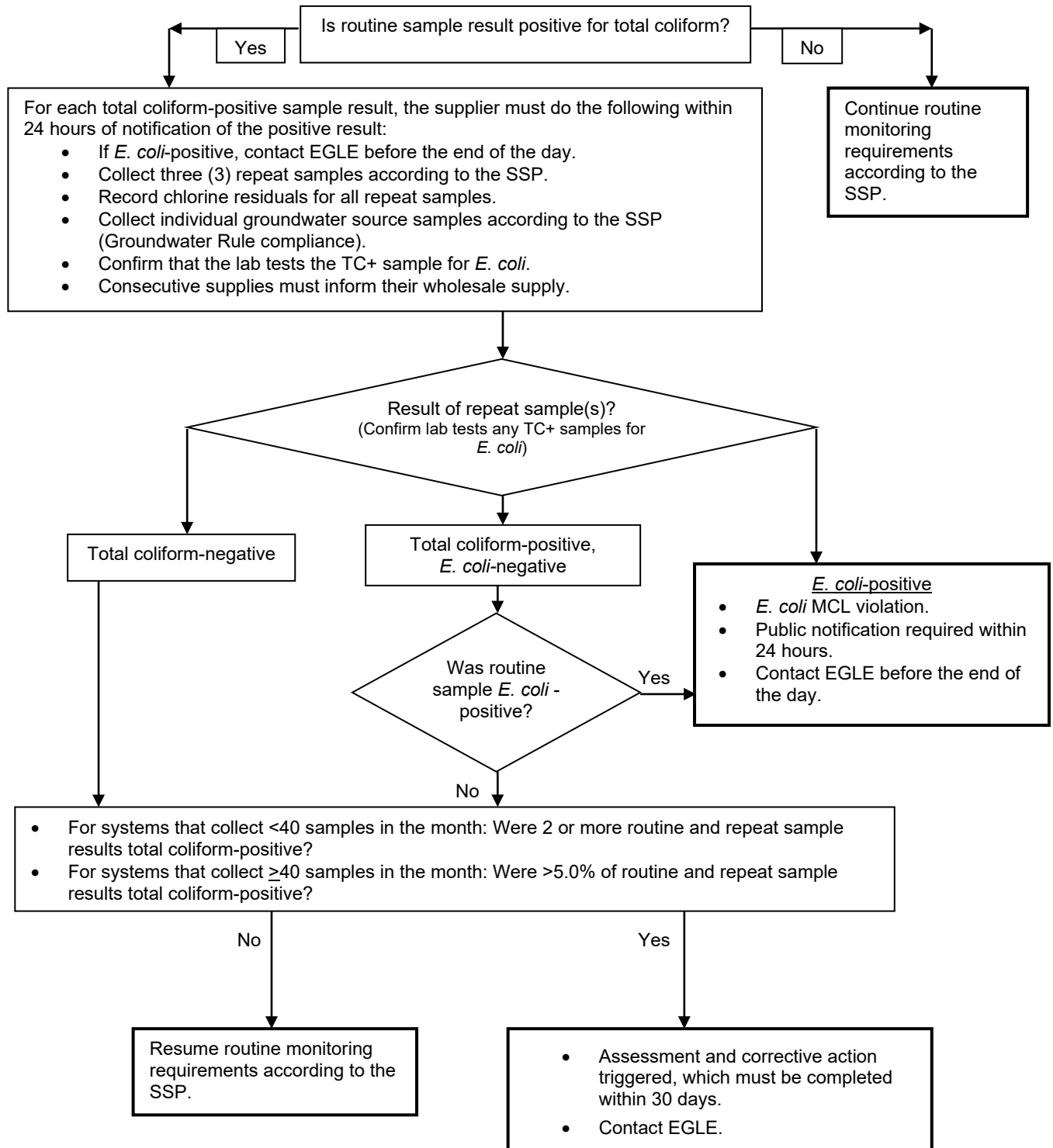




REVISED TOTAL COLIFORM RULE: ROUTINE POSITIVE SAMPLE FLOWCHART (FOR COMMUNITY WATER SUPPLIES)



- Contact EGLE if you have questions or are unsure of how to proceed.
- SSP = sample siting plan
- TC+ = total coliform-positive
- MCL = Maximum Contaminant Level