

US-12 Design-Build Project Information Sheet
Operational Improvements near the former Willow Run Plant
From near Gates to east of Ecorse Road, Washtenaw and Wayne Counties
CS 81063, 81082, 82011

The Michigan Department of Transportation (MDOT) intends on using a Design-Build procurement method to construct operational improvement on US-12. The project is located in Ypsilanti Township, Washtenaw County and Van Buren Township, Wayne County. The project limits are from near Gates Road to east of Ecorse on US-12.

The project will include roadway and bridge improvements needed to support the American Center for Mobility which will be located at the former Willow Run Assembly plant. Improvements are expected to include permanent cross overs, roadway widening and resurfacing, preventative maintenance bridge repairs and other improvements. The approximate project limits are shown below.

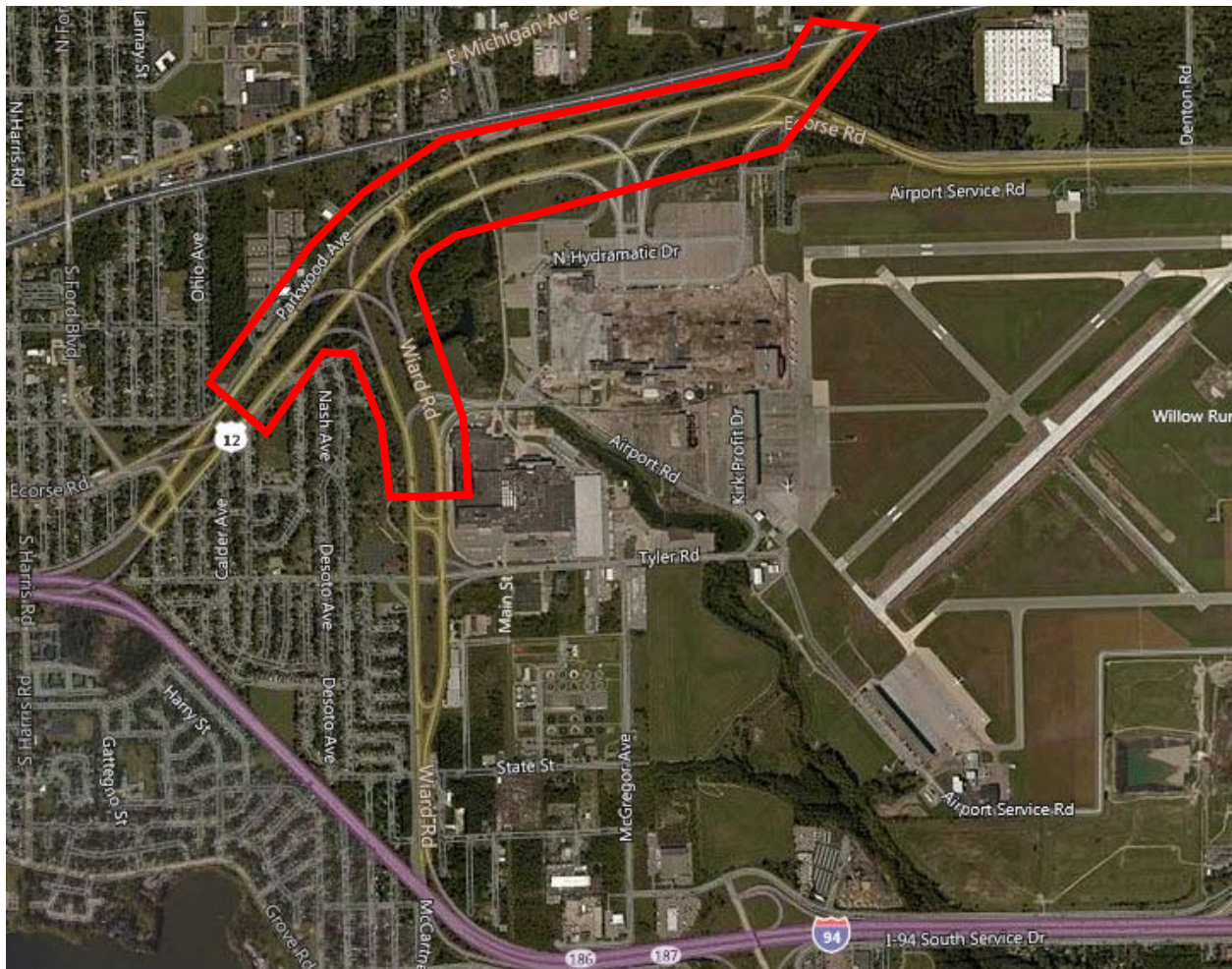


Figure 1 – Project Map

The anticipated schedule is listed below, and is subject to change:

September 2016:	Issue Request for Qualifications (RFQ)
November 2016:	Statement of Qualifications (SOQ) due
Mid to late November 2016:	Notification of short-listed submitters
December 2016:	Issue Request for Proposals (RFP)
Late February 2017:	Technical and priced proposals due
April 2017:	Anticipated contract award

The anticipated Request for Qualifications prequalification requirements are listed below and are subject to change.

Anticipated construction prequalification requirements:

- 6000 B or Cb
or
- Comb/jt 6000 Ea, Fa

Anticipated lead engineering design firm prequalification requirements:

- Design – Roadway Intermediate
- Design – Bridges
- ~~Design – Bridges: Railroad~~

Anticipated secondary design firm prequalification requirements include:

- Design – Geotechnical
- Design – Hydraulics II
- Design – Traffic: Capacity & Geometric Analysis
- Design – Traffic: Pavement Markings
- Design – Traffic Safety Studies
- Design – Traffic: Signal
- Design – Traffic: Signal Operations
- Design – Traffic: Signing – Freeway
- Design – Traffic: Signing – Non-Freeway
- Design – Traffic: Work Zone Maintenance of Traffic
- Design – Traffic: Work Zone Mobility & Safety
- Design – Utilities: Roadway Lighting
- Landscape Architecture

Additional prequalifications may be included in the RFQ or RFP.

The MDOT contact is as follows:

Lynne Kirby
MDOT, Brighton TSC
10321 E. Grand River, Suite 500
Brighton, MI 48116
Phone: 810.225.2627
Email: kirbyl@michigan.gov