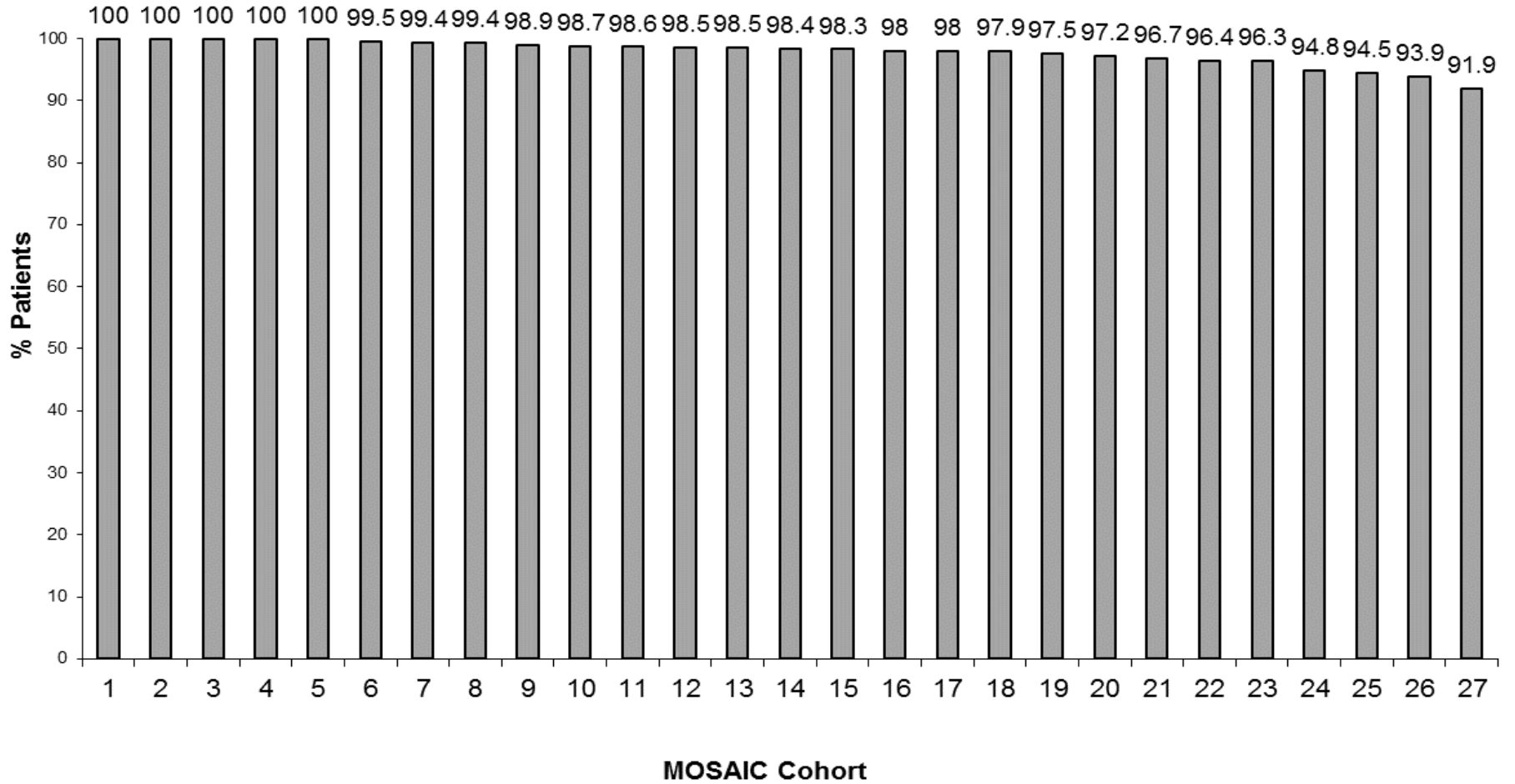




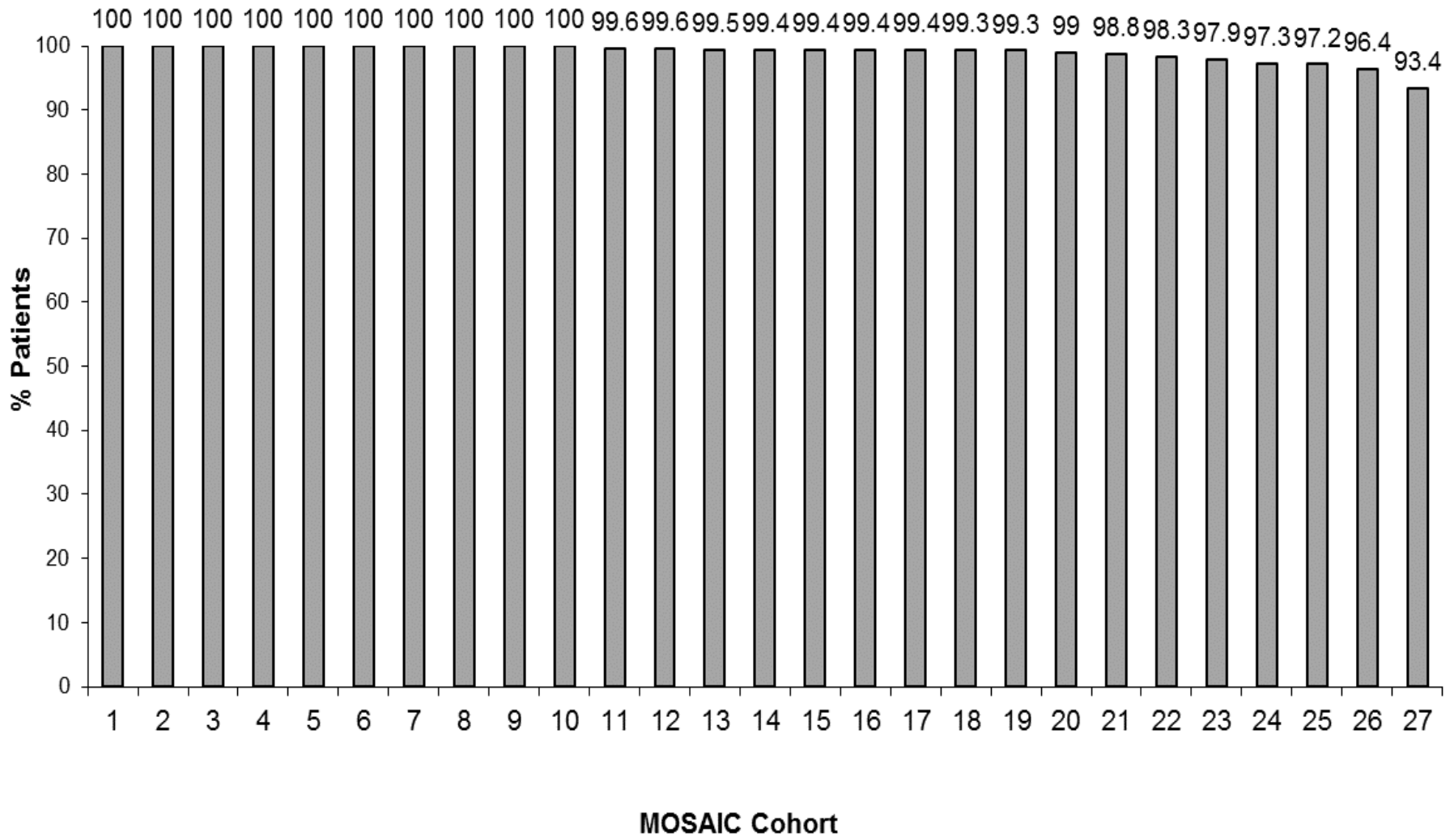
**Michigan's Ongoing Stroke Registry
to Accelerate Improvement of Care
2016 Hospital-level Performance
Measure Report**

VTE Prophylaxis*, 2016



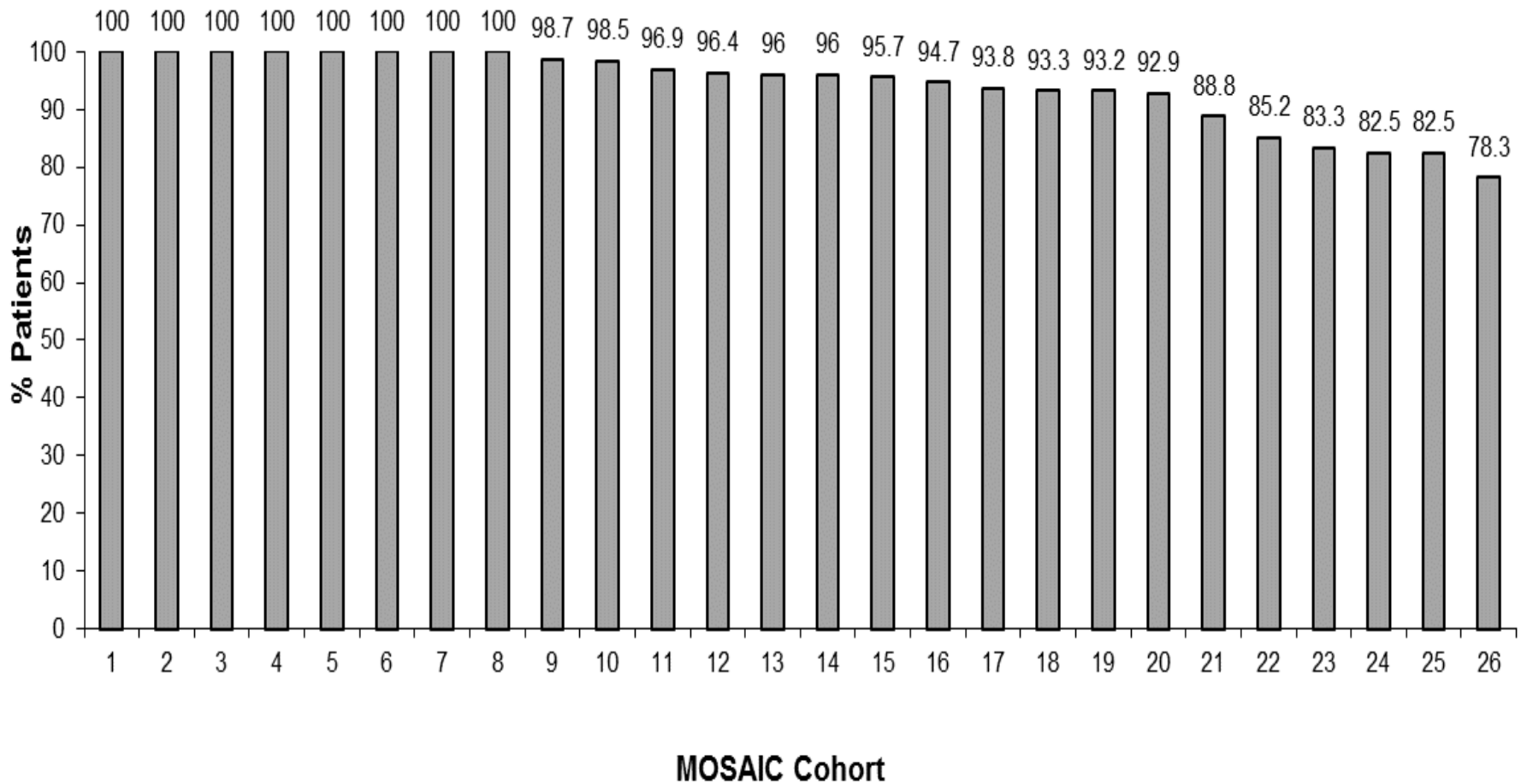
*Percent of patients who had an ischemic or hemorrhagic stroke, or stroke-not otherwise specified who received VTE prophylaxis the day of or the day after hospital admission

Antithrombotics*, 2016



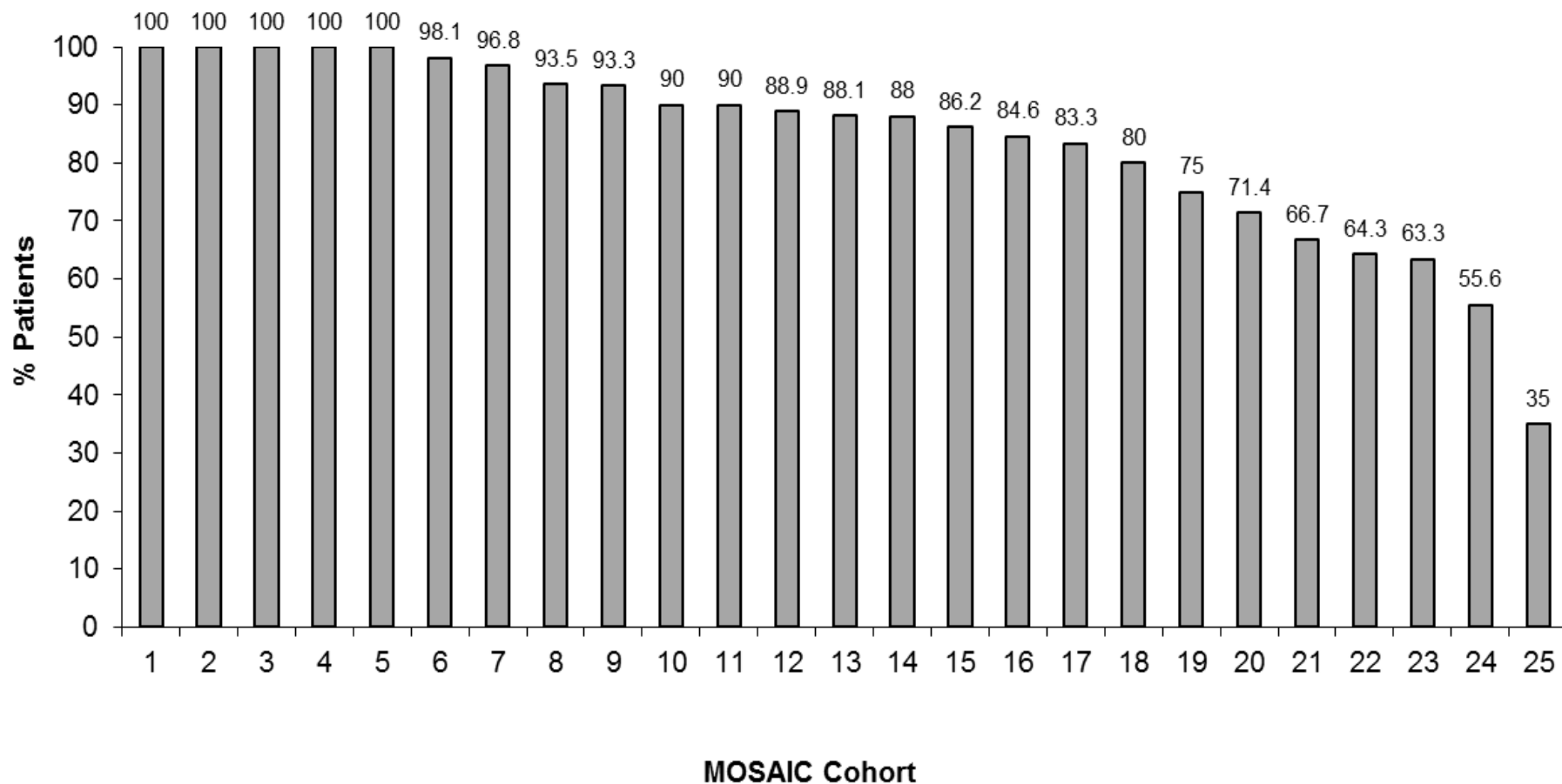
* Percent of patients who had an ischemic stroke or TIA and were prescribed antithrombotic therapy at discharge

Anticoagulation for AFib/AFFlutter*, 2016



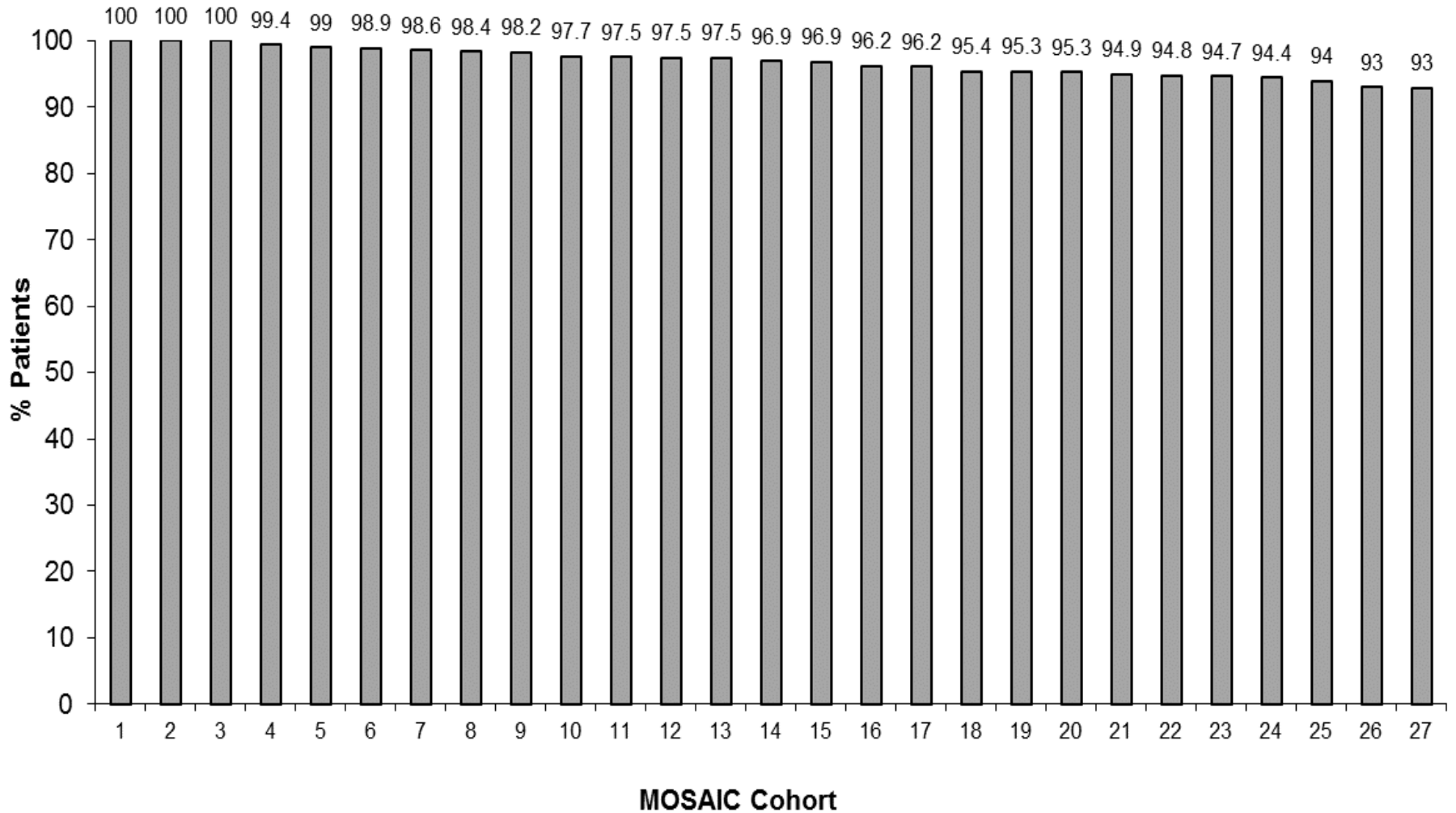
* Percent of patients who had an Ischemic stroke or TIA with atrial fibrillation/flutter discharged on anticoagulation therapy

IV rt-PA Arrive by 2 Hour, Treat by 3 Hour*, 2016



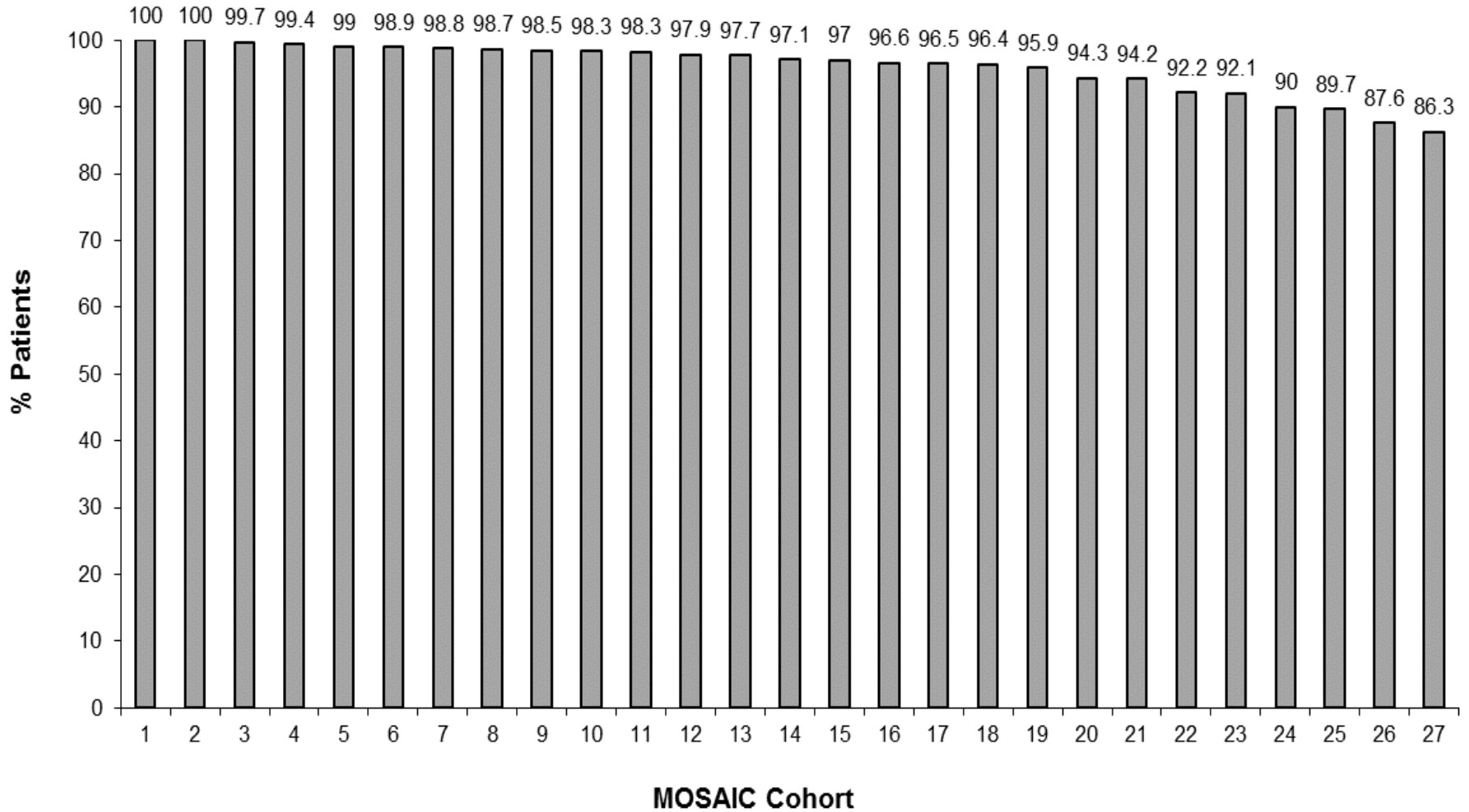
*Percent of acute ischemic stroke patients who arrived at the hospital within 120 minutes (2 hours) of time last known well and for whom IV-tPA was initiated at the hospital within 180 minutes (3 hours) of time last known well

Early Antithrombotics*, 2016



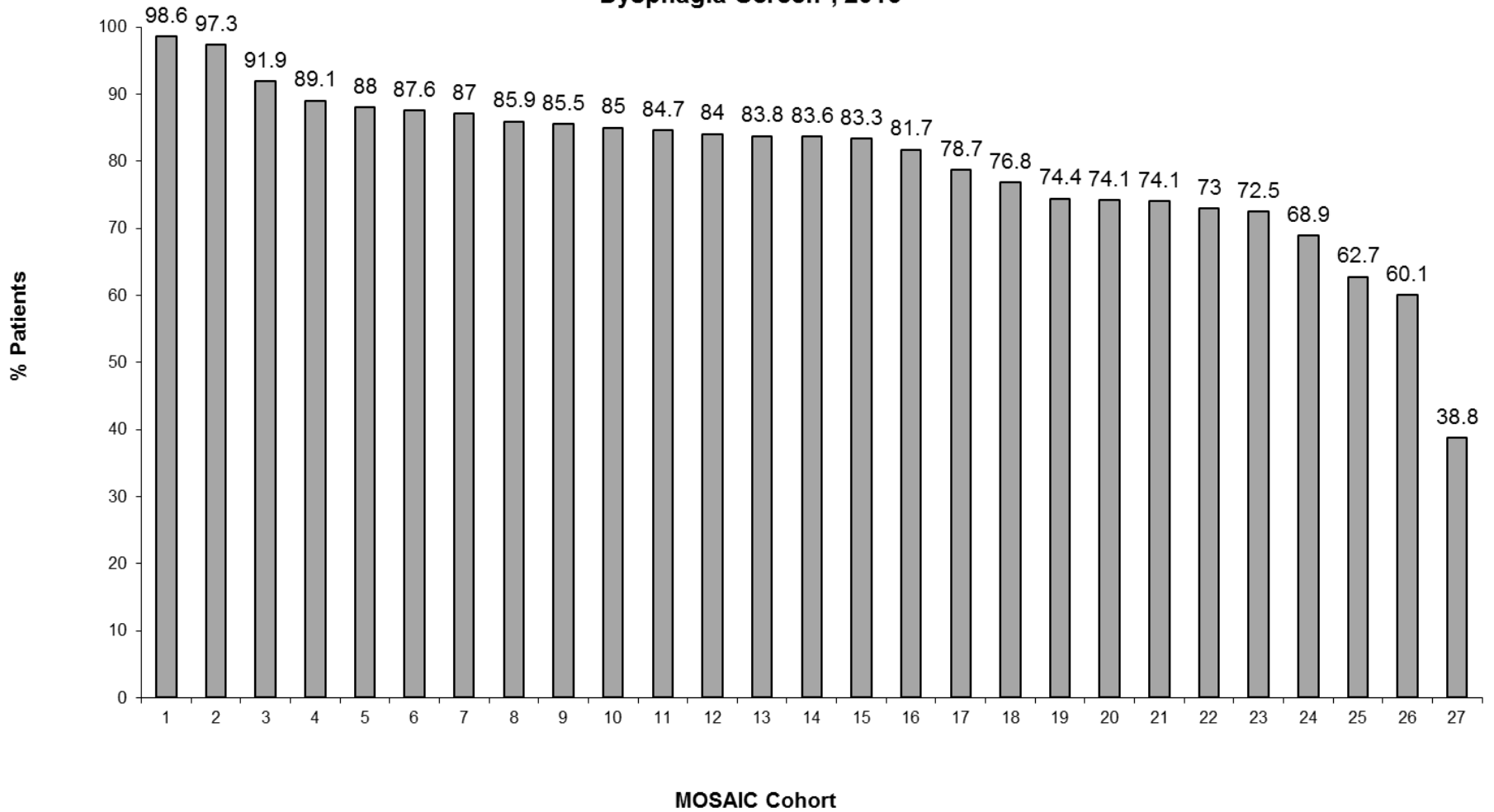
*Percent of patients with ischemic stroke or TIA who received antithrombotic therapy by the end of hospital day two

Lipid Therapy*, 2016



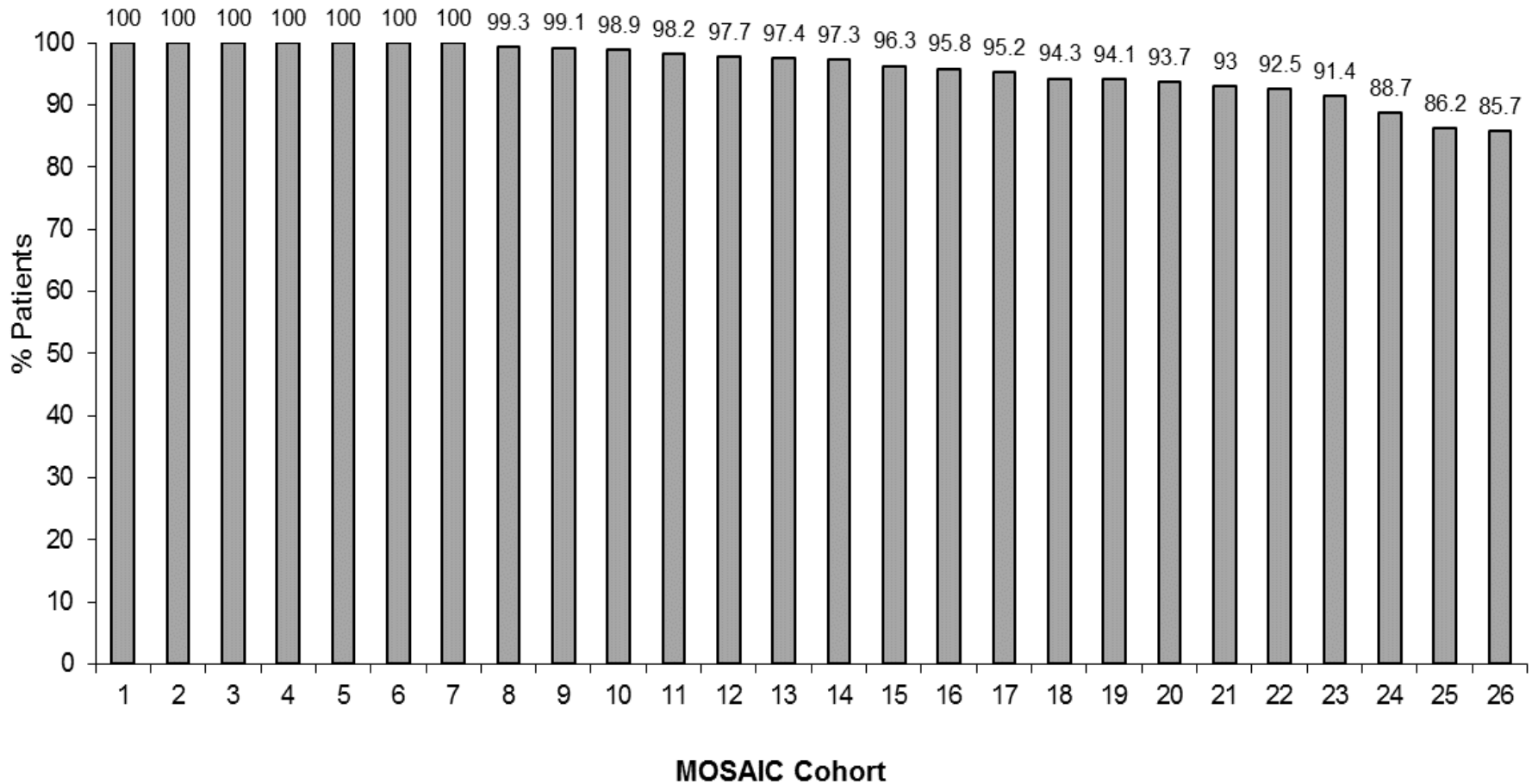
*Percent of patients with ischemic stroke or TIA with LDL \geq 100 or LDL not measured, or on cholesterol-reducer prior to admission, and were discharged on statin medication

Dysphagia Screen*, 2016



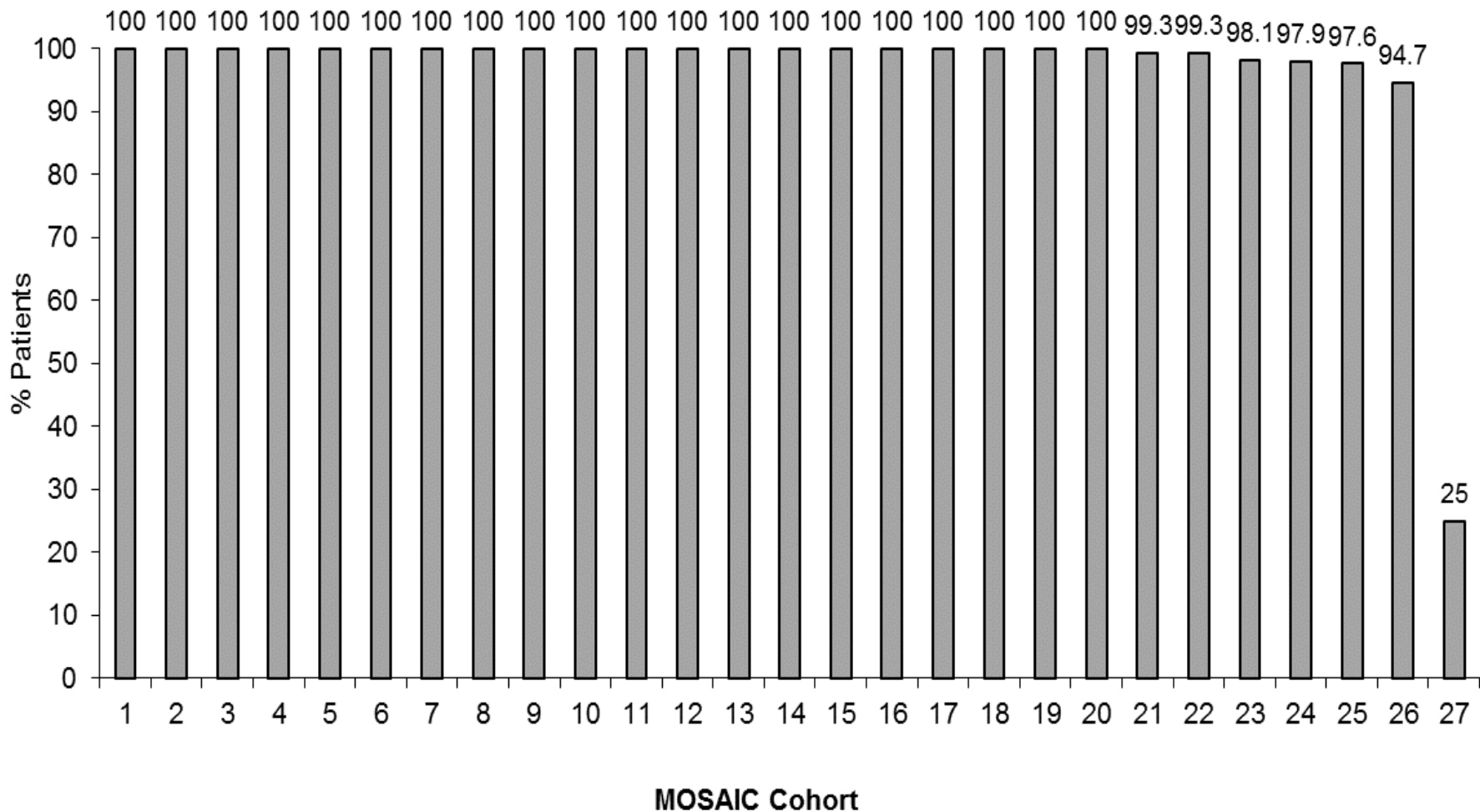
*Percent of stroke patients who underwent screening for dysphagia with an evidence-based bedside testing protocol approved by the hospital before being given any food, fluids, or medication by mouth

Stroke Education*, 2016



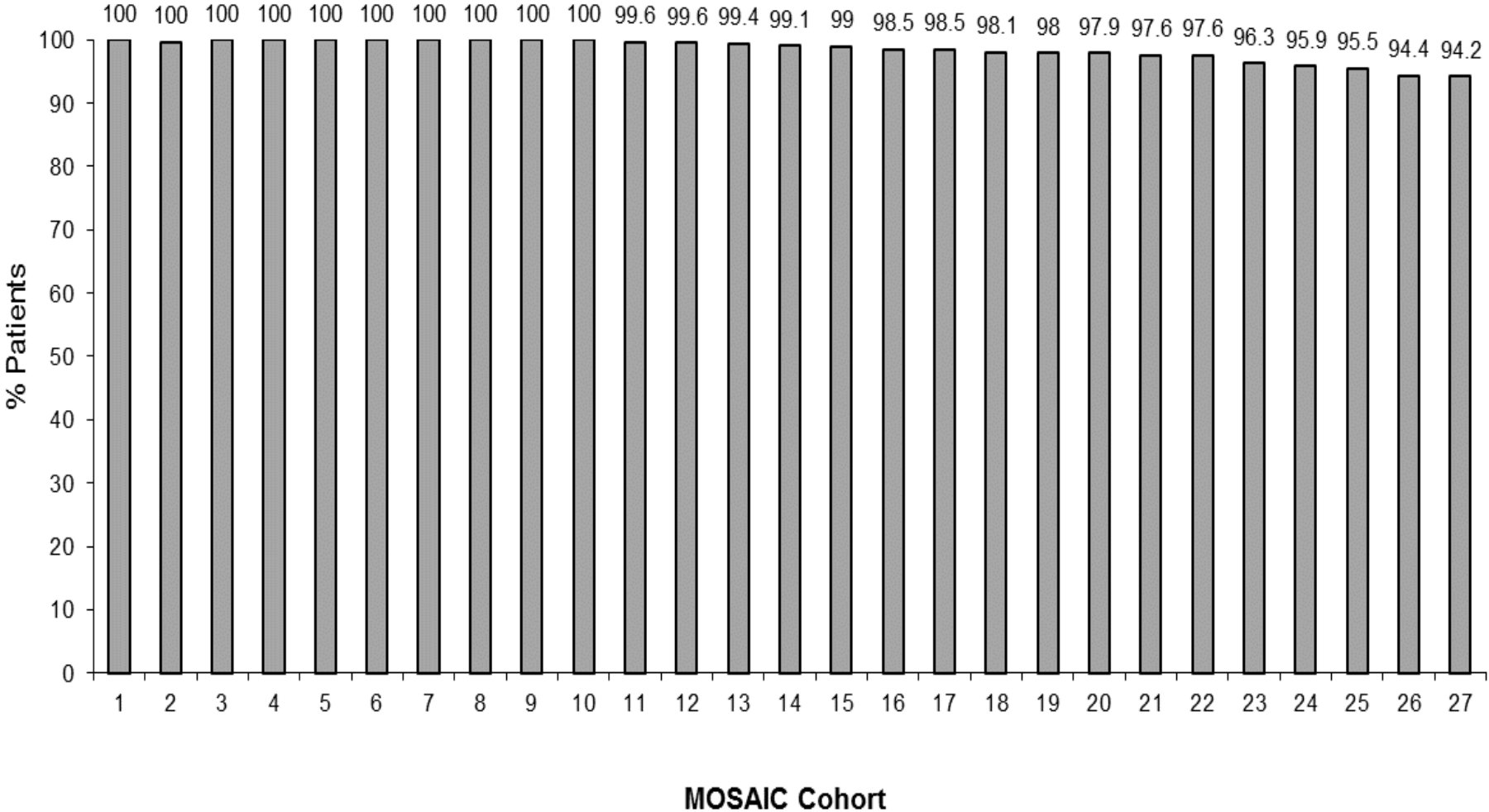
*Percent of patients with stroke or TIA, or their caregivers who were given education and/or educational materials during the hospital stay addressing ALL of the following: personal risk factors for stroke, warning signs for stroke, activation of emergency medical system, need for follow-up after discharge, and medications prescribed

Smoking Cessation*, 2016



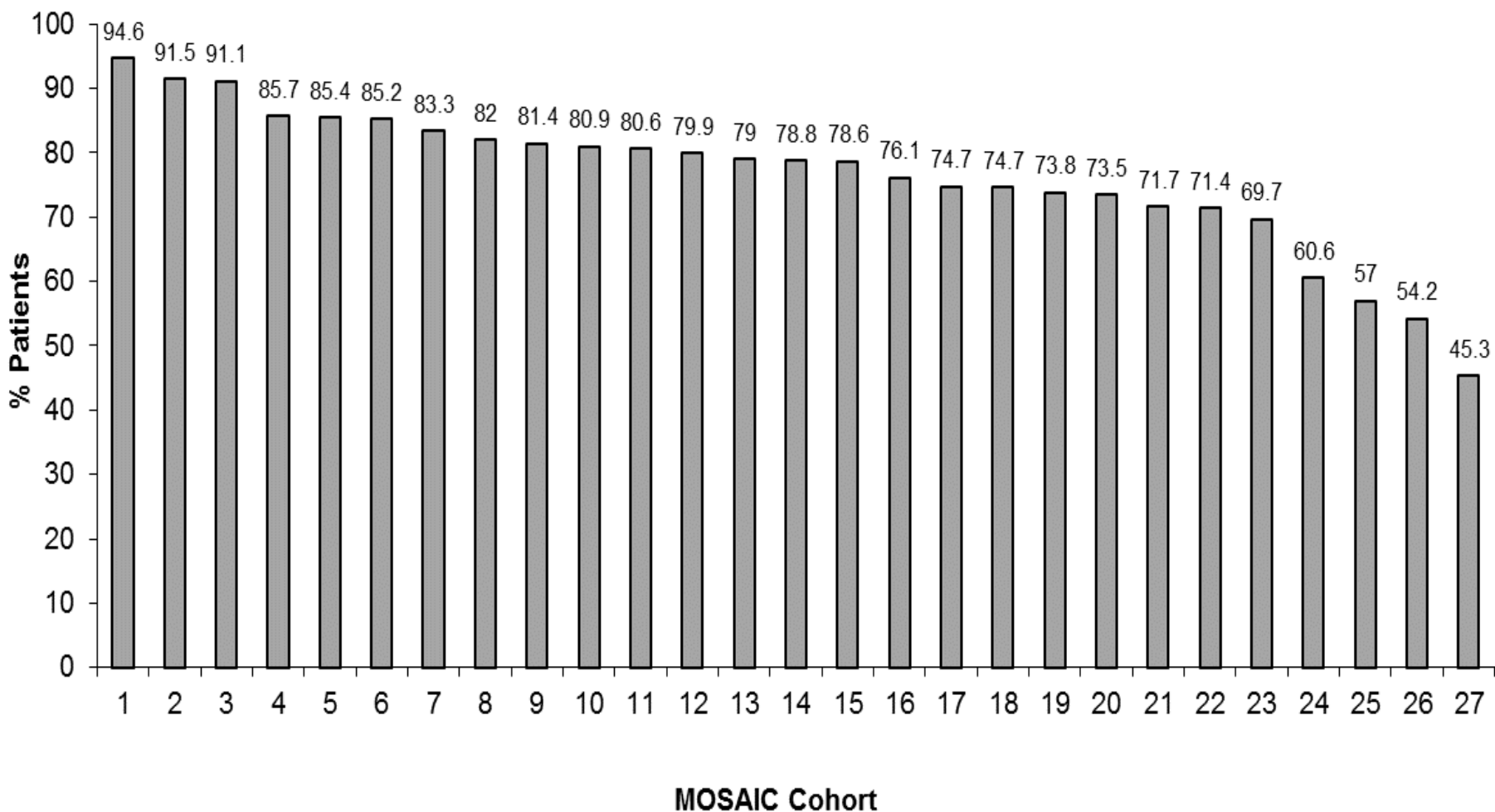
*Percent of patients who had a stroke or TIA with a history of smoking cigarettes, who were, or whose caregivers were, given smoking cessation advice or counseling during hospital stay

Rehabilitation Considered*, 2016



*Percent of patients with stroke who were assessed for rehabilitation services

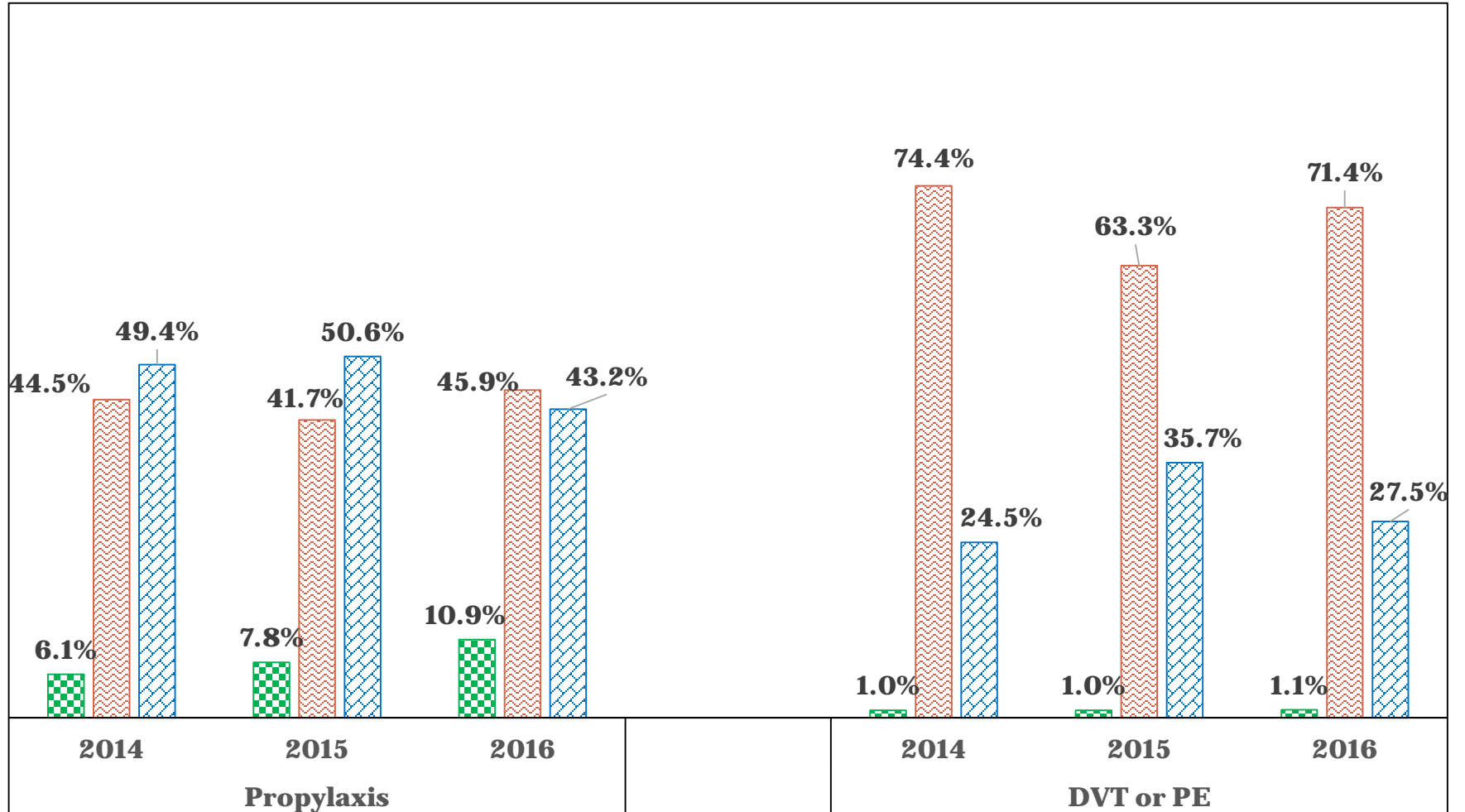
CDC Defect-Free Measure*, 2016



*Percent of patients who received all quality of care measures for which they were eligible

Is there documentation why prophylaxis was not administered at hospital admission?

Was DVT or PE documented?



Yes No Blank