



Health Care Delivery Initiative Overview

Michigan State Innovation Model Kick-Off Summit
August 10-11, 2016
Kellogg Hotel Conference Center

Great Challenge with Great Opportunity

“Transforming health care delivery is arguably the single greatest current challenge in health care policy and practice today...

...there is no single change in policy or practice that will suffice; instead, the problem must be addressed through a range of **concurrent, sequential, and mutually reinforcing changes.**”

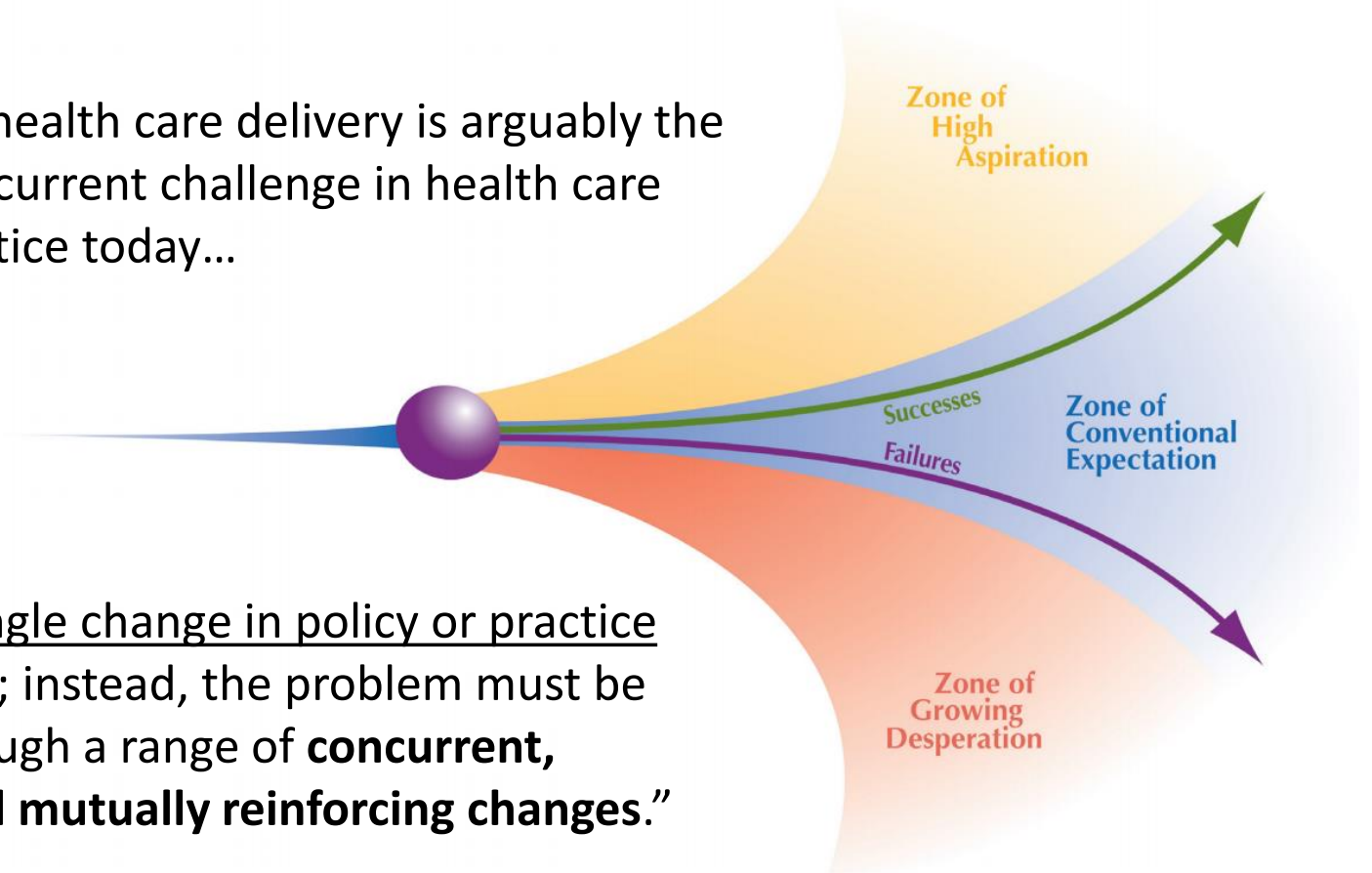


Image Credit: Institute for Alternative Futures

What could our future look like?

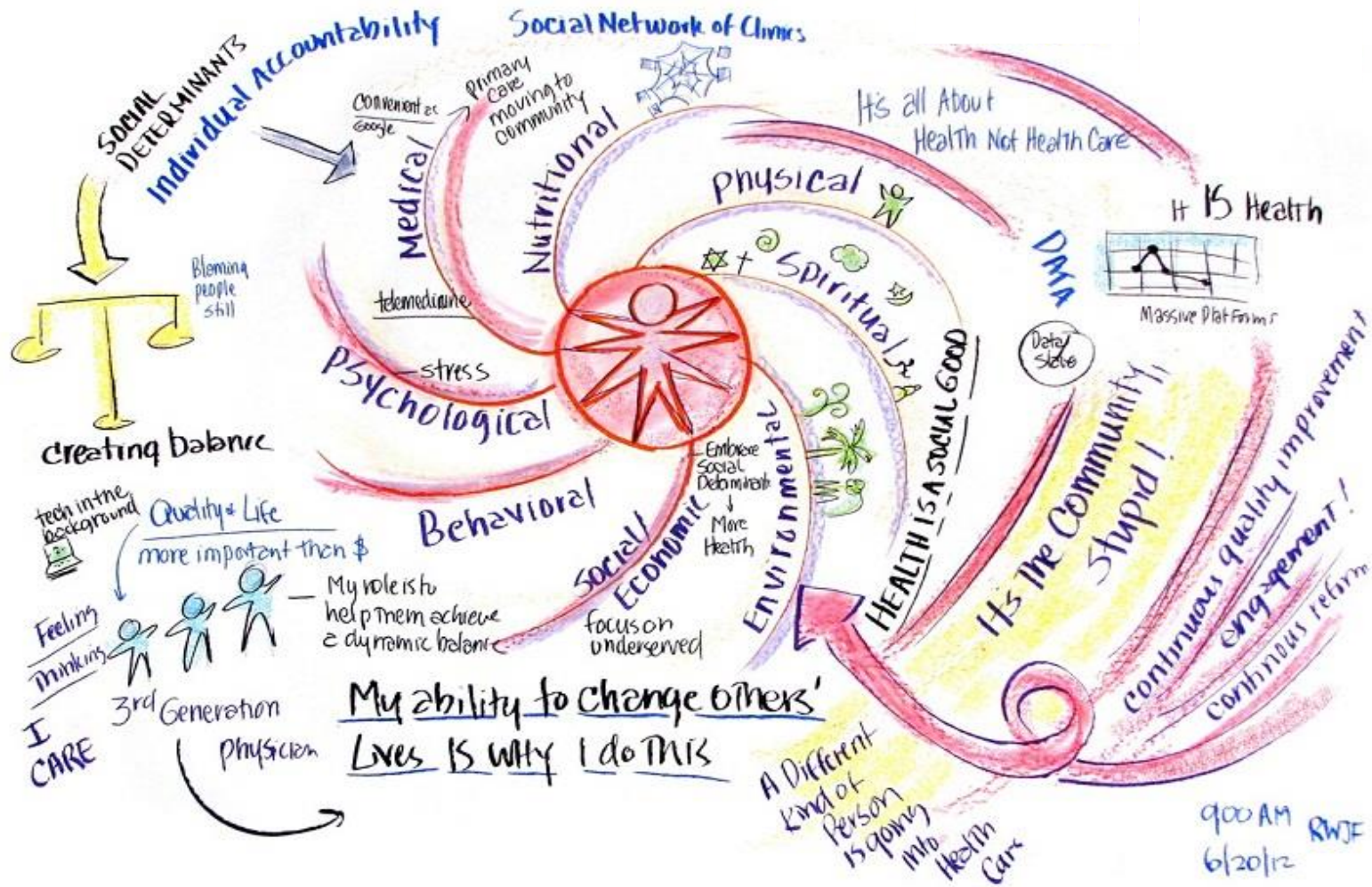


Image Credit: Eileen Clegg, Visual Insight

We've Got Assets

Primary Care
Transformation
Experience

Learnings from
Accountable Care

Significant Health
Coverage Gains

Health IT
Infrastructure

Capable Provider
Networks

Care Management
and Coordination
Competency

Credibility with
Federal Partners

Working Models for
Community
Connections

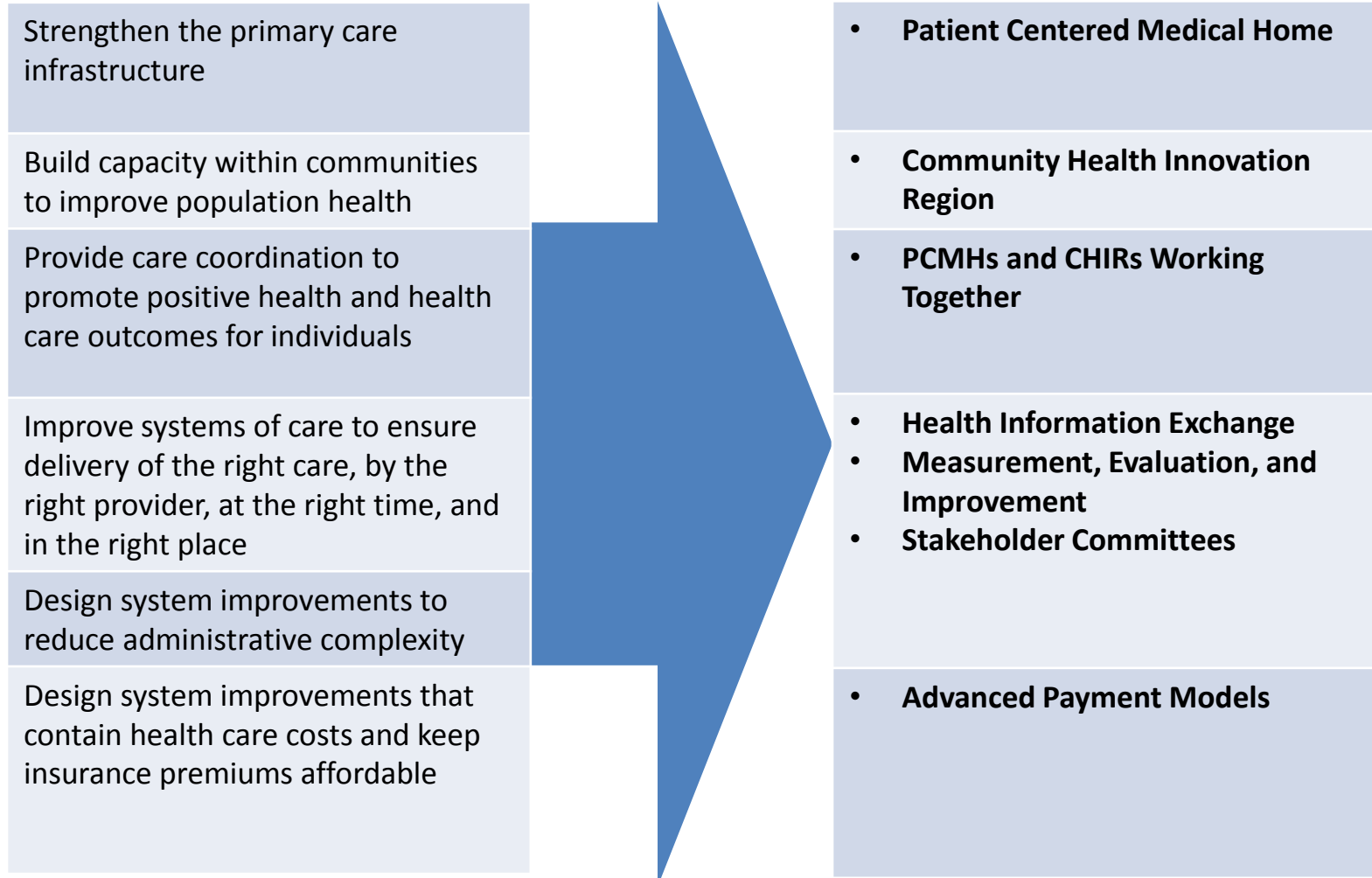
Expanded Care
Teams

Committed Payer
Partnership

Dedicated
Leadership

Respected Learning
Institutions and
Programs

Realizing the Characteristics of Michigan's Future Health System



How does SIM add value to these approaches?

Support Scale for What's Working

- Expand the PCMH foundation in Michigan including team-based care delivery, advanced access, care management, self-care support and core HIT functions

Encourage the “Next Step” for Advancement

- Support more effective care transitions, informed referrals, integrative treatment, risk stratification, HIT enabled quality improvement and information exchange

Test Promising Practices Where Opportunities Exist

- Encourage a community-centered health focus, fully linking clinical practice with community resources and population health interventions

Where Our Assets Meet Opportunities

- The world around us continues to present opportunities for growth and improvement that take many forms
- It's noisy, occasionally it's messy, and it can feel overwhelming
- Our goals don't change as the landscape and new opportunities around us do, the ways we work together to achieve our objectives evolve
- The greatest potential for success in the State Innovation Model is to cut through the noise, connect the dots, and architect a path toward the goals we share

Comprehensive Primary Care Plus
Advanced Alternative Payment Models
Chronic and Transitional Care Management
Accountable Care Organizations
State Innovation Models
Mental Health and Substance Abuse Parity
Bundled Payments for Care Improvement
Transforming Clinical Practice Initiative
Accountable Health Communities
Medicaid/CHIP Managed Care Final Rule
Health Care Payment Learning and Action Network
Advancing Care Information

Today's Top of Mind Opportunities

- When combined, the PCMH Initiative (including the Custom Option available through SIM) and the Comprehensive Primary Care Plus program provide Michigan a great platform for continued success

| Program | Potential Roles and Contributions |
|---|---|
| PCMH Initiative (including Custom Option) | <ul style="list-style-type: none">• Provide a near term mechanism to ensure Medicaid engagement and payment participation for CPC+ selected practices<ul style="list-style-type: none">• This will require an effort on the part of all stakeholders match participating providers across programs• Through the custom option:<ul style="list-style-type: none">• Provide an “on ramp” to PCMH transformation for practices that were not ready to participate when the CPC+ program began• Engage providers excluded from CPC+ in PCMH transformation efforts and payment models• Advanced alternative payment models for providers interested in and prepared for further payment reform |
| CPC+ | <ul style="list-style-type: none">• Sustain the multi-payer payment model collaboration needed to build on MiPCT's PCMH transformation without interruption• Continue advancement in comprehensive primary care functions |

Near Term Strategy (2016-2017)

- Launch the PCMH Initiative
January 2017, a Michigan Primary Care Transformation Partnership with the State Innovation Model
 - Seize opportunities to ensure similar programs (like CPC+ and the PCMH Initiative) align on common goals
 - Grow the number of primary care providers participating in PCMH transformation
 - Make investments in advanced primary care capability through supportive payment, practice learning and bolstering/expanding evidenced based efforts
 - Continue improvements in quality of care, health outcomes and patient satisfaction

Looking Toward the Future

- Identify new opportunities (like the Custom Option) which can compliment current efforts, advance care effectiveness, and bolster PCMH payment reform (thinking one step ahead on our path)
 - Spread PCMH transformation across Michigan
 - Sustain investments and encourage bold advancements
 - Reward shared ownership and accountability (community and clinical practice) for health outcomes
 - Deploy information sharing strategies which deepen the insights of patients and all health partners

Near Term Strategy (2016-2017)

- Ensure a thorough understanding of where Michigan's payment landscape stands today including benchmarking current efforts
- Recognize the reach of and opportunities for payment reform beyond Michigan's large scale PCMH efforts
- Support and encourage payers and provider networks in developing market-driven payment reform models that support multiple facets of the health system

Looking Toward the Future

- Establish progressively advancing goals for the scale of Michigan residents, providers and healthcare spending attributable to Alternative Payment Models
- Leverage payer partnerships and contract/regulatory opportunities (where available) to develop widespread commitment to APM goals

Near Term Investments

- \$22million 2017 investment in Care Management and Practice Transformation funded by the Medicaid budget and SIM grant dollars
- No-cost access for participants to the multi-payer, online data reporting and performance dashboard tools available through the Michigan Data Collaborative
- Partnership with the Institute for Healthcare Improvement for a SIM grant supported collaborative learning network to enhance PCMH practice transformation efforts
- Significant investment in care management and coordination training for practice staff, including work to ensure training opportunities for new types of Care Coordinators
- Partial funding of enhanced (greater focus on practice level actionable data) CAHPS process for participants
- Contracts with consulting partners to add expertise and formalize partnerships where it benefits the Initiative's overall goals
- Supplemental training, free to participants, on key issues like coding for non-traditional service provision
- Initiative administration infrastructure which supports processes that practices and payers need to ensure meaningful participation

- What we know, and what we don't know (today) about the PCMH Initiative and CPC+ in 2017
 - We will dive head first into the weeds on the things we do know and highlight the places we're still working to figure out with partners
- How the PCMH Initiative application process will work and proposed expectations for participants
- Engaging discussion about future opportunities for transformation alternative payment models