

# Stroke Education for First Responders

[www.AmericanCME.com](http://www.AmericanCME.com)

**FREE CME CREDITS**

[www.AmericanCME.com](http://www.AmericanCME.com)

American CME has three new Continuing Education programs designed for First Responders: MFR, EMT and Paramedic. These video based productions will focus on STROKE care and assessment in order to optimize care and patient outcomes in the field. Stroke is a serious and costly problem facing our nation. In the United States 800,000 people are having strokes every year, making this the 5th leading cause of death and the number one cause of disability. Thousands of these patients are suffering from long-term neurodeficits ranging from memory loss to paralysis.

Following the onset of stroke it has been estimated that with every passing minute, prior to reperfusion therapy, a mind boggling 14 billion synapses and 1.9 million brain cells are lost. With so many people suffering from strokes each year we must ask ourselves, **"are we identifying every stroke we encounter in the field?"**

## Stroke: Anatomy and Pathophysiology: 0.5 credits

### Course Objectives:

- Differentiate between different types of strokes.
- Identify positive indications of a stroke using various stroke scales.
- Identify various stroke syndromes based on stroke assessment findings.
- List and prioritize treatments for stroke patients in the pre-hospital setting.
- Identify the key findings to communicate to a receiving stroke center when transporting a stroke patient.

## Stroke: EMS Transport Options: 0.5 credits

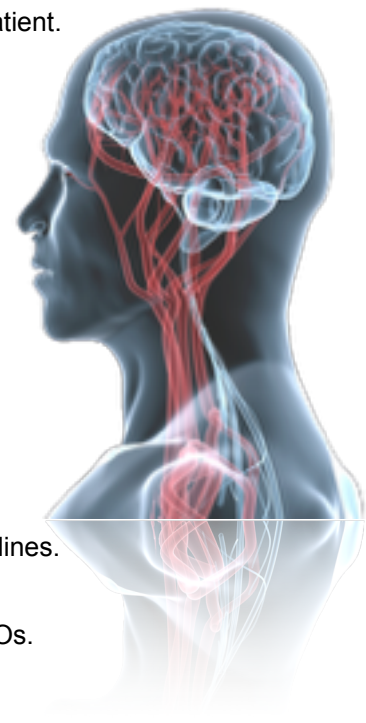
### Course Objectives:

- Appreciate what is at stake for stroke patients.
- Identify and describe the various Stroke Center treatment options for stroke patients.
- Compare and contrast Primary and Comprehensive Stroke Centers.
- Identify and describe key factors that directly impact functional outcomes for stroke patients.

## Stroke: A New Standard of Care for Large Vessel Occlusions: 0.5 credits

### Course Objectives:

- List the 2015 AHA Stroke Guidelines.
- List and describe data and study findings that support key changes to the 2015 AHA Stroke Guidelines.
- Define and describe the role of EMS and their impact on functional outcomes for stroke patients.
- Describe and demonstrate how to detect an LVO utilizing LAMS and RACE scales of recognition.
- Identify and describe hospitals with the interventional capabilities necessary to effectively treat LVOs.
- Appreciate the impact EMS can have on recognizing and treating LVOs.
- List and describe treatments that should be considered when caring for a stroke patient.



## FREE Continuing Medical Education (CME)

To participate in these courses or others, visit [www.AmericanCME.com](http://www.AmericanCME.com). Register for a **free account**, then view the online course and take the post-course exam. Upon successful completion, participants will earn up to 1.5 hours of CME that is accepted by most US states and some other countries. See the American CME website for details.

For technical assistance or questions, please contact American CME at: [AmericanCME@AmericanCME.com](mailto:AmericanCME@AmericanCME.com)

In collaboration with



**CAPCE**  
Accreditation Pending

Supported by  
an educational grant from  
**Medtronic**

