


Spotlight

on Student Assessment and Accountability


February 14, 2019

Quick Links . . . take you directly to articles or sections . . .

- [WIDA – Bubbling-In Student Information on Test Booklets](#)
- [Student Transfers During WIDA ACCESS for ELLs Testing Window](#)

 [PSAT/SAT Accommodations — Deadline Soon!](#)

- [MI-Access and PSAT Flexibility for Grade 8](#)
- [2017-18 School Accountability Reports and Accountability Student Datafiles Now Available for Preview on MI School Data!](#)
- [2018-19 Annual Education Report \(AER\) Coming Soon](#)
- [Alternate INSIGHT Availability Request Window: January 14 – March 7, 2019](#)

 [Important Reminders](#)

- [College Board Corner](#)
- [ACT WorkKeys](#)
- [Important Dates](#)
- [Contacts](#)

WIDA – Bubbling-In Student Information on Test Booklets


Educators are reminded that some information should still be bubbled in on all student's test booklets regardless if a Pre-ID label is affixed to the booklet. Districts choosing to not bubble in the minimum amount of information for students who do have a Pre-ID label are risking the ability of DRC and MDE to match a test booklet to a particular student in the event that a label is damaged or falls off. For the minimum list of information to be filled in, refer to the [Michigan Specific Directions](https://wida.wisc.edu/sites/default/files/state-specific-directions/MI-State-Specific-Directions.pdf) (<https://wida.wisc.edu/sites/default/files/state-specific-directions/MI-State-Specific-Directions.pdf>). This document can also be found on the [WIDA website](http://www.michigan.gov/wida) (www.michigan.gov/wida).


Student Transfers During WIDA ACCESS for ELLs Testing Window

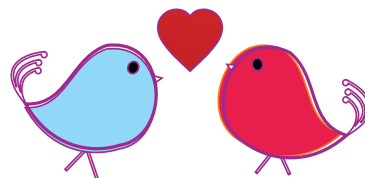
If a student transfers in or out of the district during Michigan's testing window, it may be possible to transfer the student's Online tests to the receiving district. This process can help ensure students are not unnecessarily tested twice. More specific information about student transfers can be found in the WIDA AMS User Guide as well as the Michigan Specific Test Administration Manual.

PSAT/SAT Accommodations — Deadline Soon!

The last day to apply for accommodations for College Board assessments is **February 19, 2019**. If a student needs accommodations on these assessments, applications must be made using the SSD online system. This is true for PSAT 8/9 (including grade 8), PSAT 10, and SAT. Please be sure requests have been submitted for all students who need accommodations by this date.

Key:  Reminder (previously run article)

 includes supports and accommodations information



Important Dates

Approaching Deadlines!

February 19, 2019:

- Window to apply for state-allowed accommodations for **SAT with Essay, PSAT 10, PSAT 8/9 CLOSES**
- Window to identify English Learners for 50% extended time for **SAT with Essay, PSAT 10, and PSAT 8/9 CLOSES**
- **DEADLINE** to apply for College Board-approved accommodations and state-allowed accommodations for **SAT with Essay, PSAT 10, and PSAT 8/9**

February

Early Literacy and Mathematics, M-STEP, and MI-Access

Now – February 25, 2019:

- Pre-ID and Online Test Sessions in the OEAA Secure Site for **M-STEP** and **MI-Access**

Now – March 7, 2019:

- Alternate INSIGHT Availability requests for schools with regular instructional hours after 4:00 PM that plan to schedule **M-STEP** or **MI-Access** test sessions to extend beyond 4:00 PM. [Submit request](https://baameap.wufoo.com/forms/alternate-insight-availability-request-zsjan7c1lla3h2/) (<https://baameap.wufoo.com/forms/alternate-insight-availability-request-zsjan7c1lla3h2/>).

Now – May 24, 2019:

- Off-Site Test Administration request window for individual students, such as homebound or students expelled with services, for **M-STEP, MI-Access, and Early Literacy and Mathematics Benchmark Assessments**

WIDA

Now – March 22, 2019:

- Off-Site Test Administration request window for individual students, such as homebound or students expelled with services, for **WIDA**

Now – March 22, 2019:

- Window for Test Setup in **WIDA AMS**

ACT WorkKeys

Now – April 19, 2019:

- Off-Site Test Administration request window for individual students, such as homebound or students expelled with services, for **ACT WorkKeys**

Early Literacy and Mathematics

Now – February 25, 2019:

- Pre-ID and Online Test Sessions in the OEAA Secure Site for **Spring Early Literacy and Mathematics Benchmark Assessments**

WIDA

Now – March 22, 2019:

- **WIDA ACCESS for ELLs** and **WIDA Alternate ACCESS for ELLs** Test Administration Window

SAT and PSAT

February 26, 2019:

- Mandatory coordinator training is available for **SAT with Essay, PSAT 10, and PSAT 8/9**

(Continued on next page)

Call Center: 877-560-8378 (select appropriate option) for assistance with assessment or accountability issues

March 2019

M-STEP, MI-Access, and Early Literacy and Mathematics

March 5, 2019 from 10:00–11:00 AM

- **M-STEP** District and Building Coordinator Training for Online Testing Webinar:
[Click to Join](#)
(presentations will be available prior to training)
- Meeting number: 283 759 317
- Meeting password: Spring2019

March 6, 2019 from 10:00–11:00 AM

- **MI-Access** District and Building Coordinator Training for Online Testing Webinar:
[Click to Join](#)
(presentations will be available prior to training)
- Meeting number: 288 641 391
- Meeting password: Spring2019

March 7, 2019 from 10:00–11:00 AM

- **Early Literacy and Mathematics** District and Building Coordinator Training for Online Testing Webinar:
[Click to Join](#)
(presentations will be available prior to training)
- Meeting number: 286 482 841
- Meeting password: Spring2019

SAT and PSAT

March 20, 2019 – March 28, 2019

- Additional material order window in the OEAA Secure Site for **SAT with Essay**, **PSAT 10**, and **PSAT 8/9** standard test books, answer sheets, and manuals.

ACT WorkKeys

Tuesday, March 19, 2019, 3:30–4:30 PM:

- **ACT WorkKeys Q&A Webinar #2** – [Register here](https://event.on24.com/wcc/r/1865113/9AB75EE59E7C30D14F6B8B094D9374CF)
(<https://event.on24.com/wcc/r/1865113/9AB75EE59E7C30D14F6B8B094D9374CF>)



Call Center: 877-560-8378 (select appropriate option) for assistance with assessment or accountability issues

Contacts

For assistance with assessment or accountability issues:

Assessment and Accountability Call Center

877-560-8378 (select appropriate option)

Options	Topics
1	to report cheating and unethical behavior by a district/school in regards to state assessments
2	for support of Central Office Services (COS), Test Management System (TSM), eDIRECT, and INSIGHT for the online M-STEP, MI-Access, and Early Literacy and Mathematics Benchmark Assessments (K-2)
3	for support of the OEAA Secure Site for <u>all</u> state assessments, administration and policy questions related to M-STEP, MI-Access, Early Literacy and Mathematics Benchmark Assessments (K-2), and accountability reporting
4	for questions about the College Entrance and Workskills assessments <ol style="list-style-type: none"> 1. Eligibility, MDE policies, and OEAA Secure Site Support 2. SAT, PSAT 8/9, and PSAT 10 – College Board 3. WorkKeys – ACT
5	for questions about the WIDA ACCESS for ELLs, WIDA Alternate ACCESS for ELLs, and support for WIDA AMS, INSIGHT, Central Office Services (COS), and Test Management System (TSM)
8	for all other questions

Email

For assessment questions:

mde-oeaa@michigan.gov

For accountability questions:

MDE-Accountability@michigan.gov

For assistance with WIDA Screener, W-APT, and the WIDA Secure Portal questions:
(for questions not covered in options 3 and 5 in the table above)

WIDA Client Services

866-276-7735

Call Center: 877-560-8378 (select appropriate option) for assistance with assessment or accountability issues